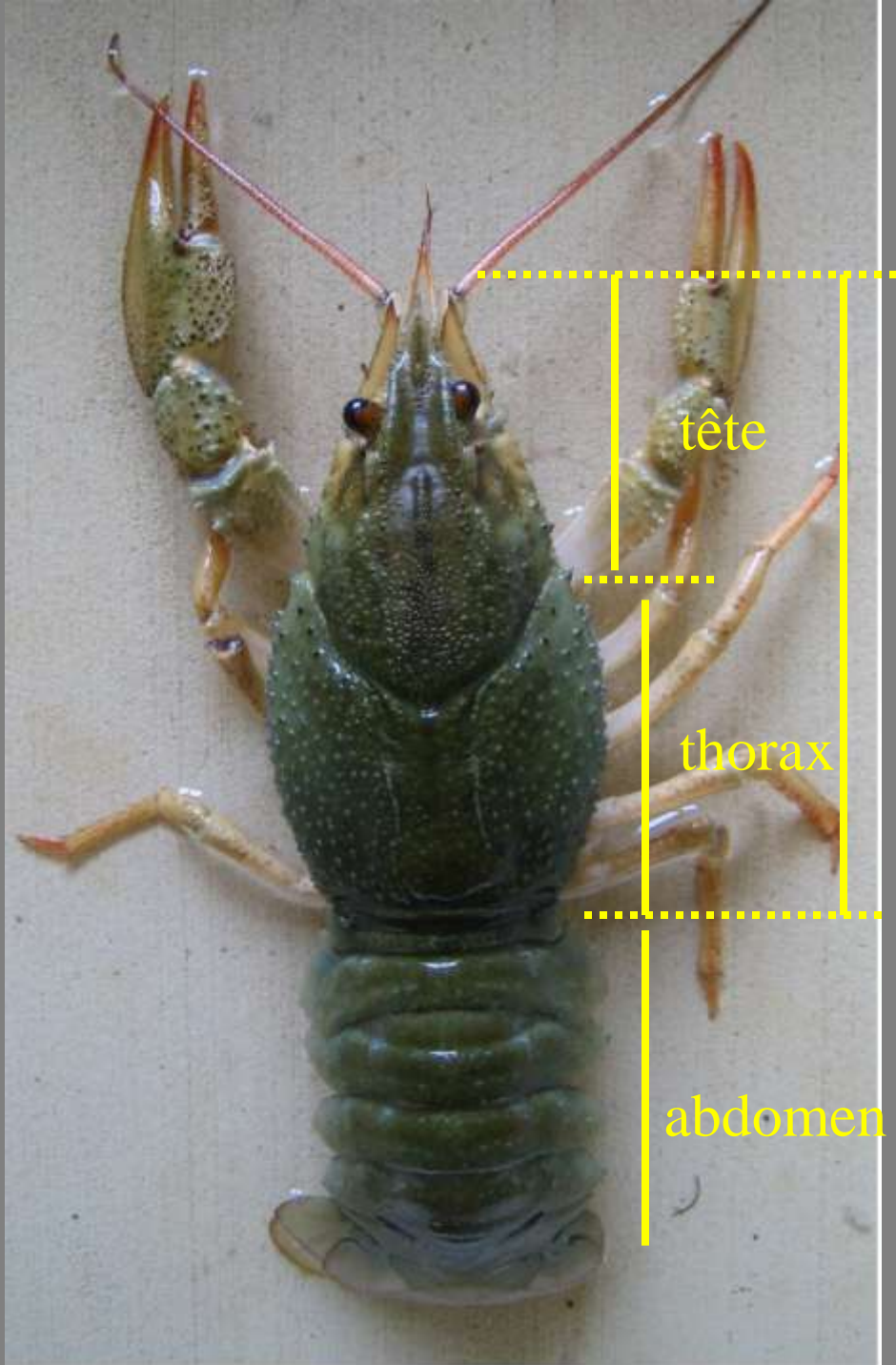


T.P. ECREVISSE



Morphologie externe (profil gauche)



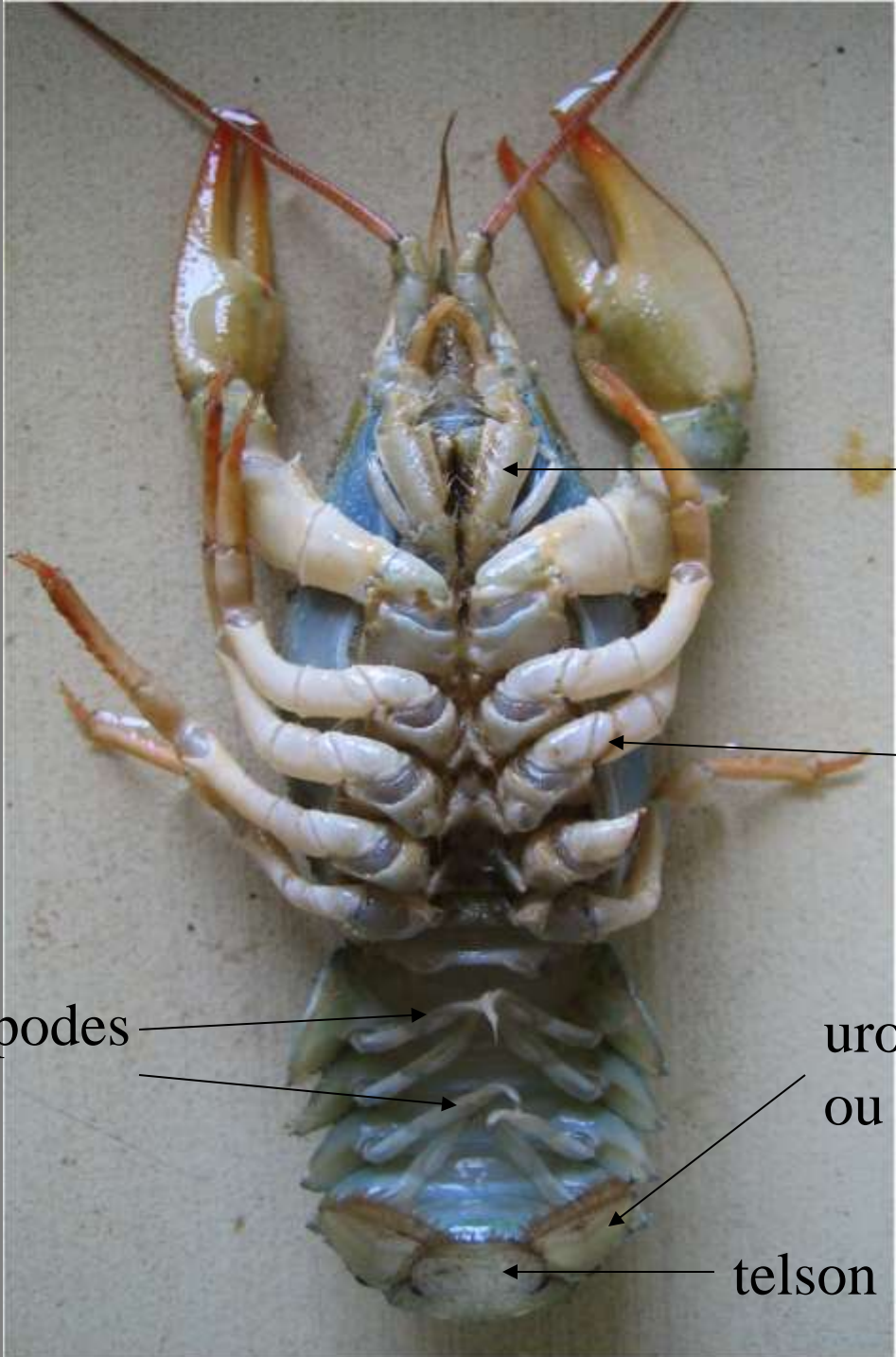
céphalothorax

tête

thorax

abdomen

Morphologie
externe
(vue dorsale)



Patte thoracique 3
ou patte mâchoire n°3
ou pmx3

Patte thoracique 6
ou patte ambulatoire 3

Pléopodes

uropode
ou pléopode 6

telson

Palette
natatoire



Orifice
génital
femelle

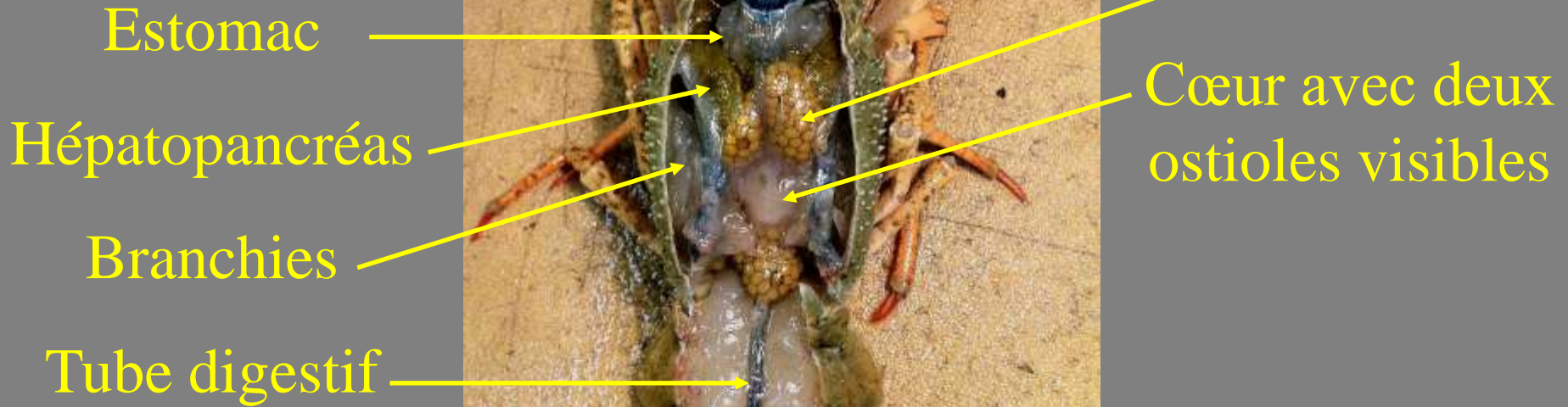
FEMELLE



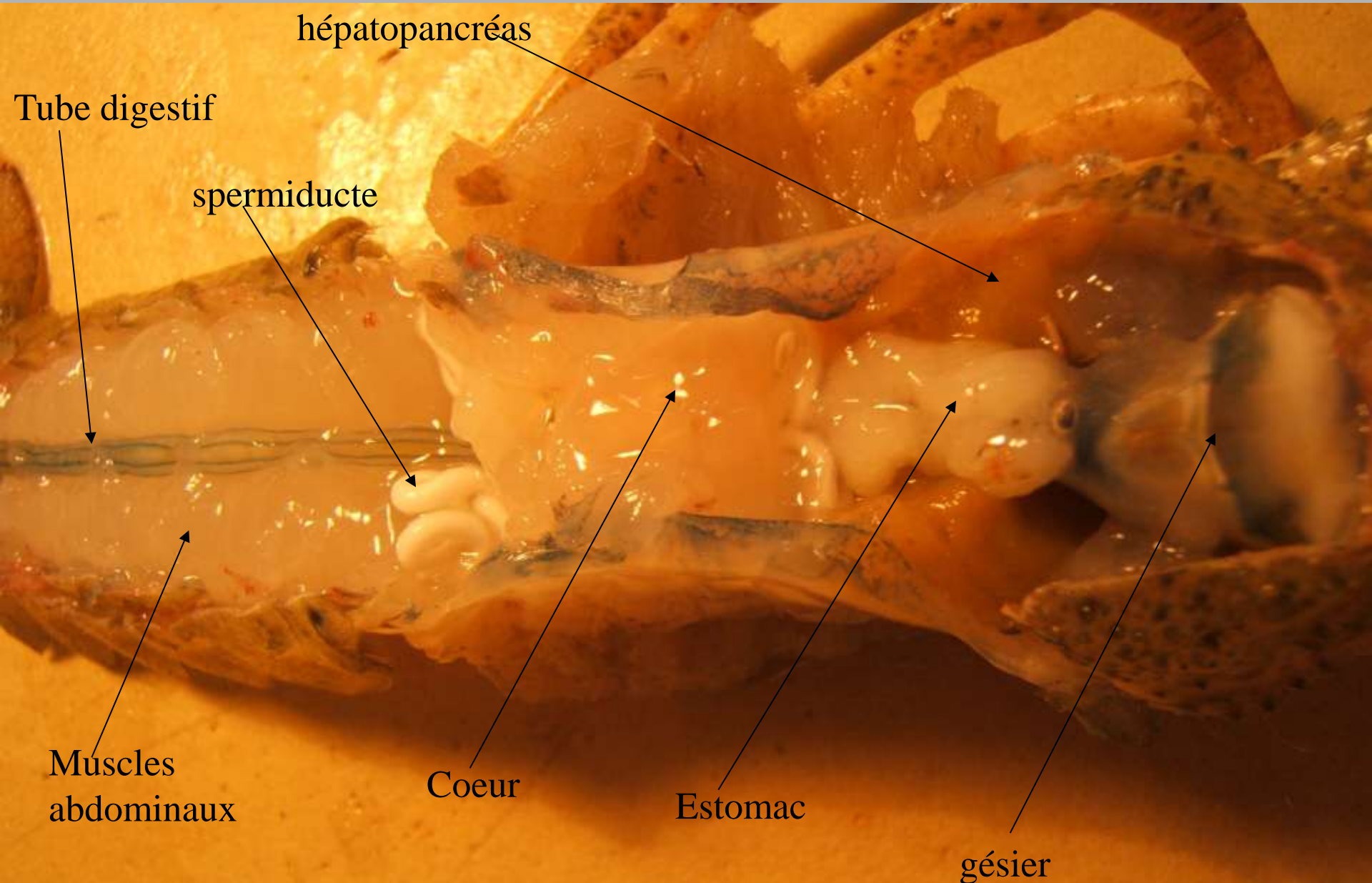
Orifice
génital mâle

MÂLE

Organes en place



Anatomie, cuticule dorsale ôtée

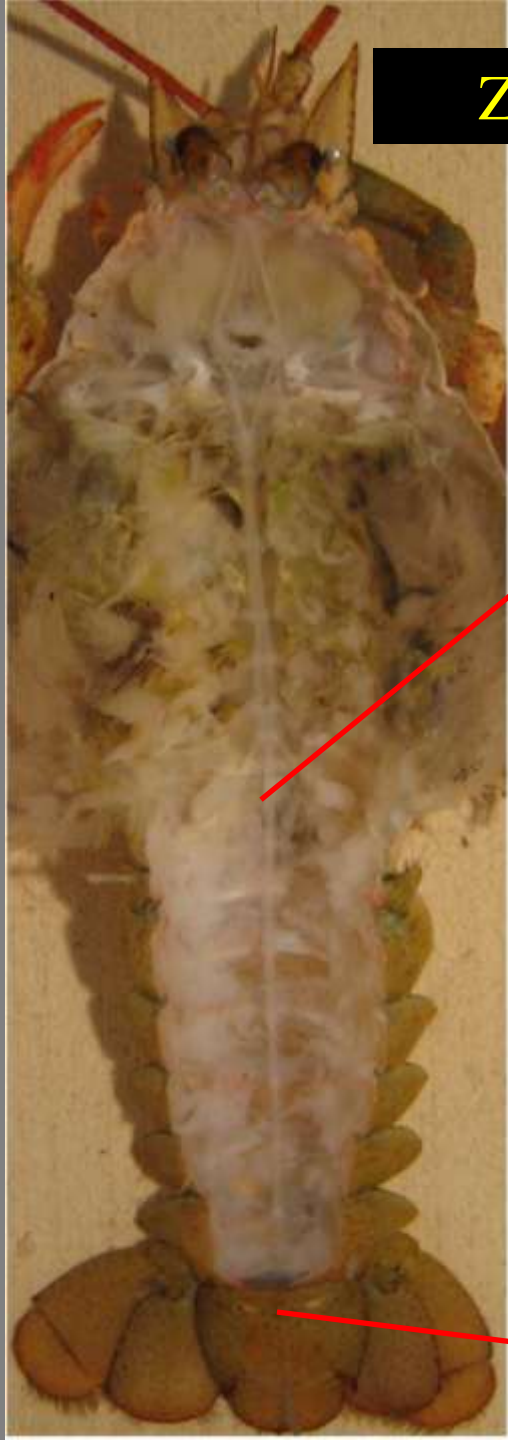


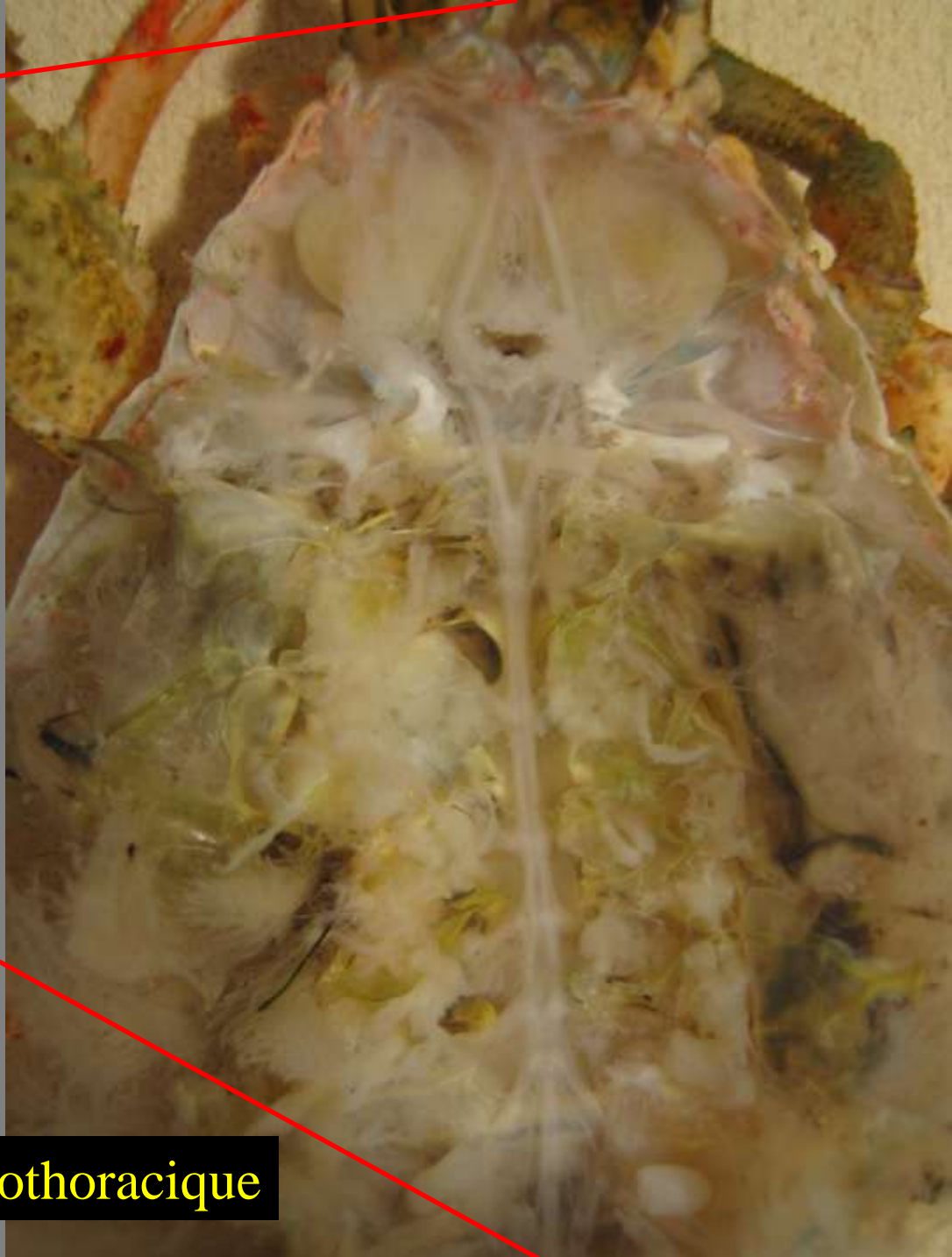


**MISE EN EVIDENCE
DU SYSTEME NERVEUX**

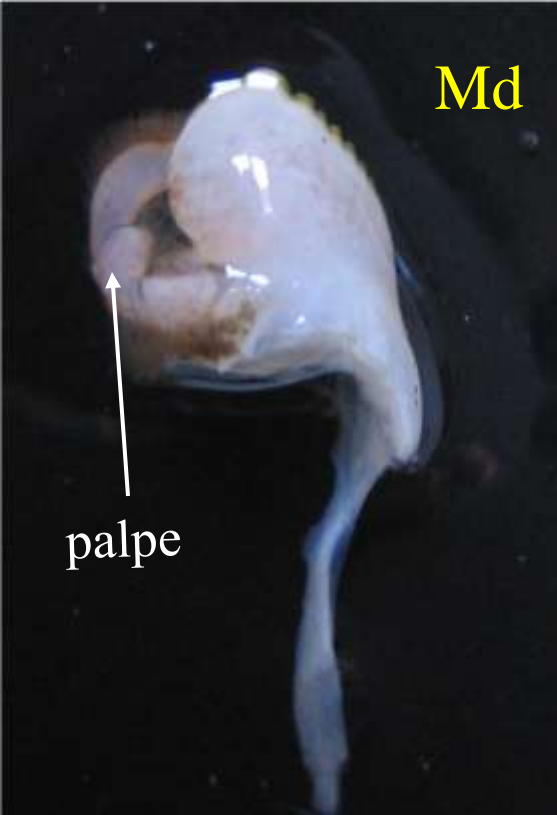


Zone abdominale





Zone céphalothoracique



Les pièces masticatrices céphaliques

Pmx1



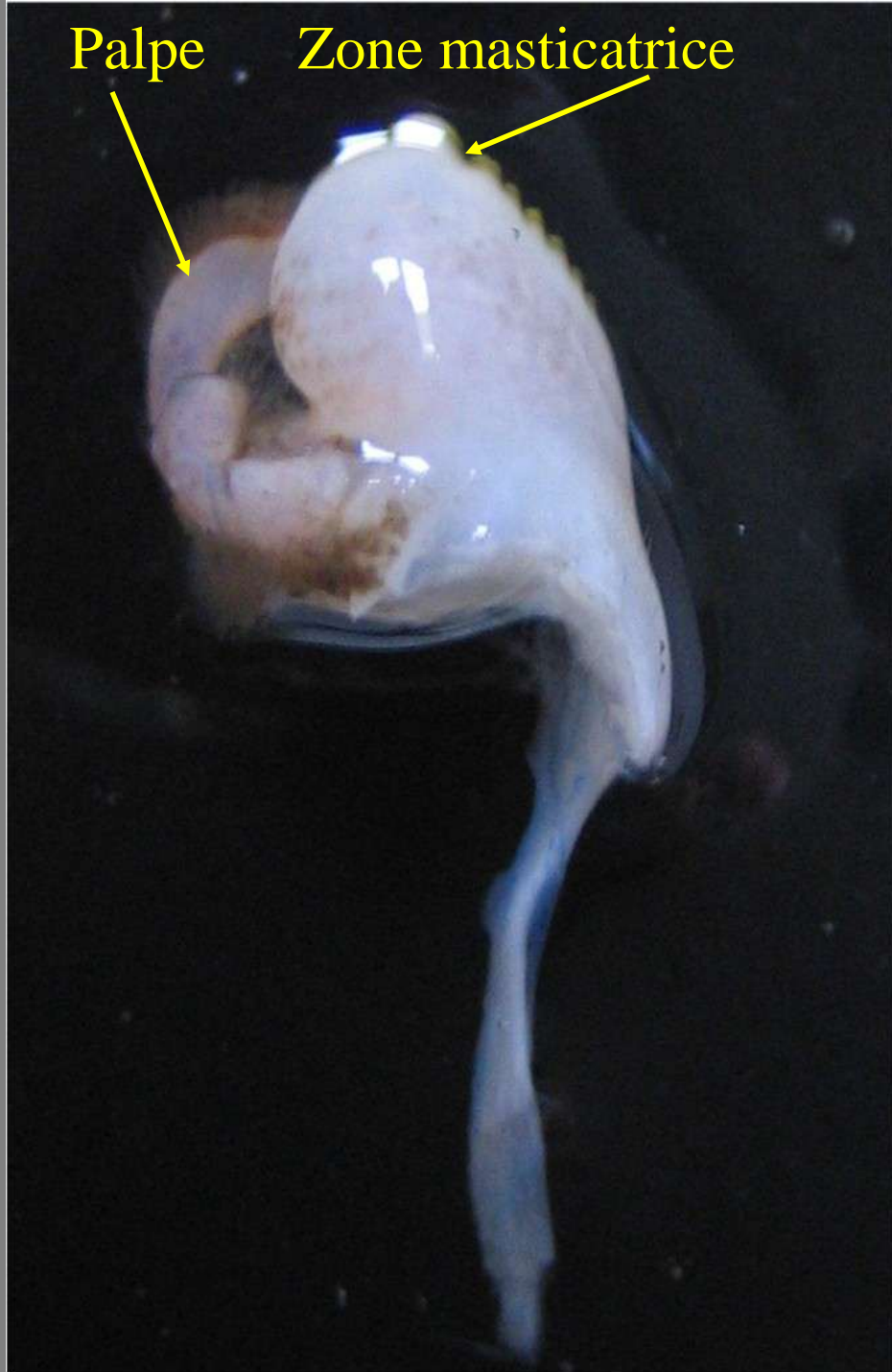
Les pièces
masticatrices
thoraciques

Pmx2



Pmx3





MANDIBULE

Md

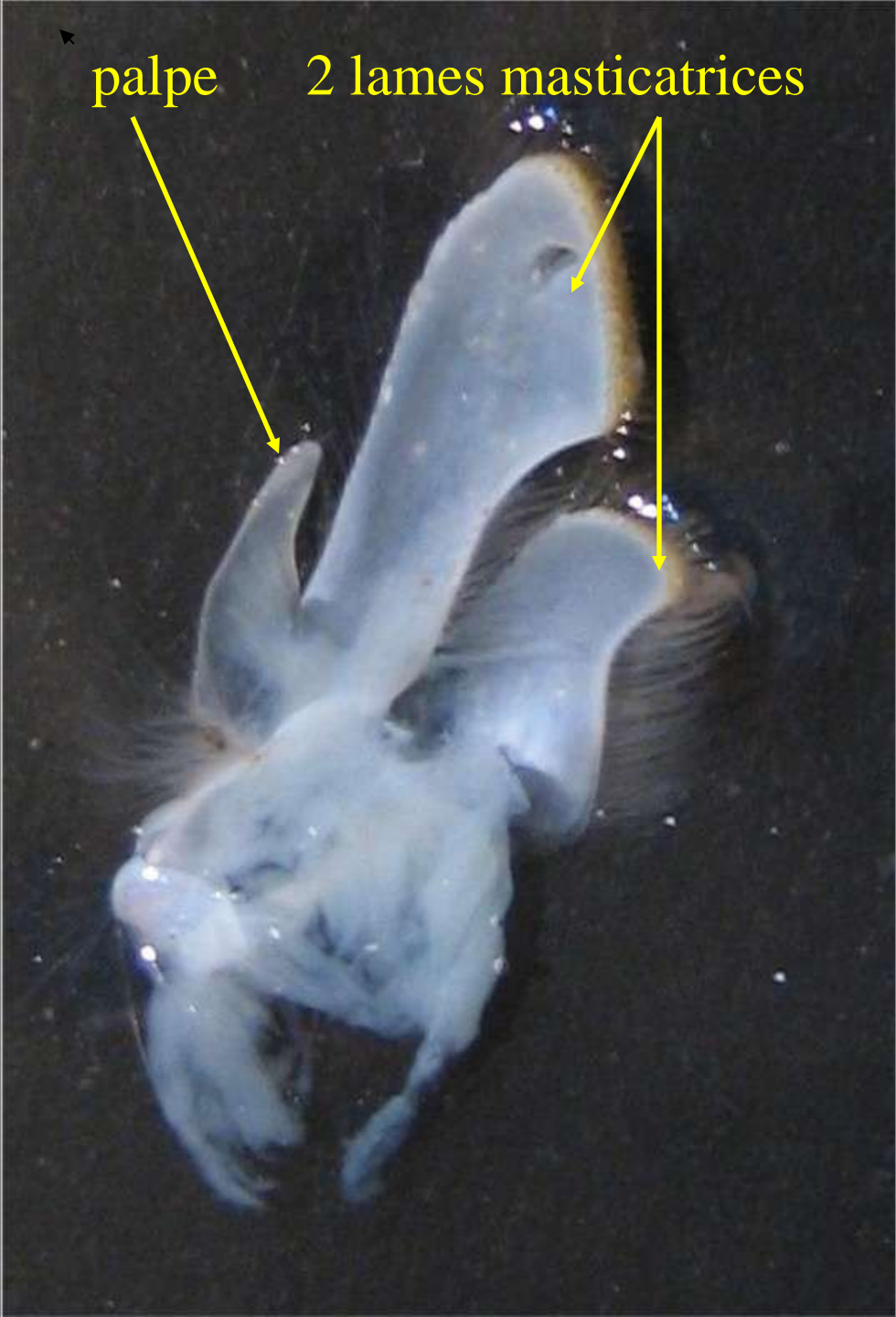
palpe

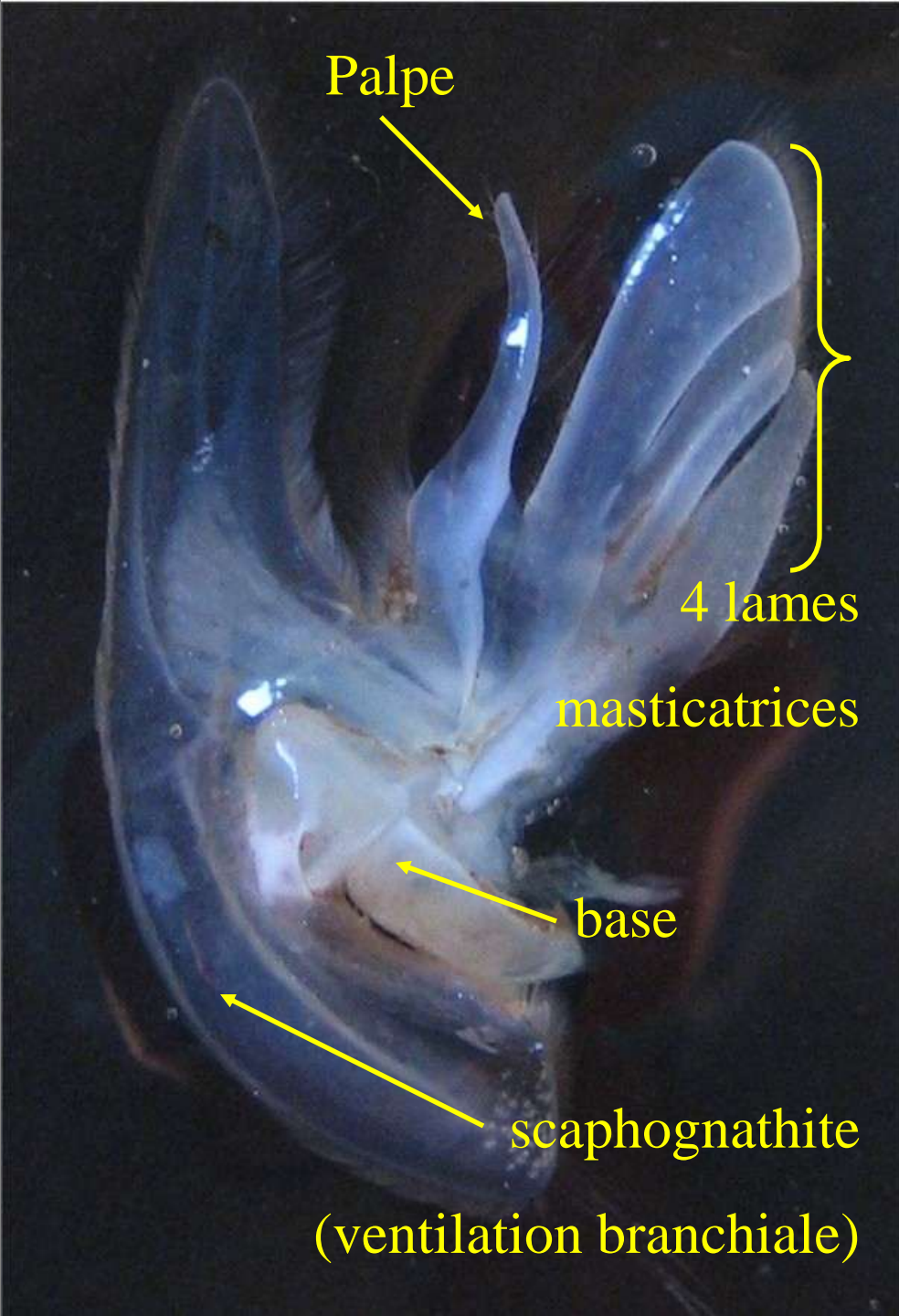
2 lames masticatrices



MAXILLULE

Mx1





MAXILLE

Mx2

Palpe à fouet terminal



2 lames

masticatrices



← plaque molle

membraneuse

Patte- Mâchoire

Pmx1

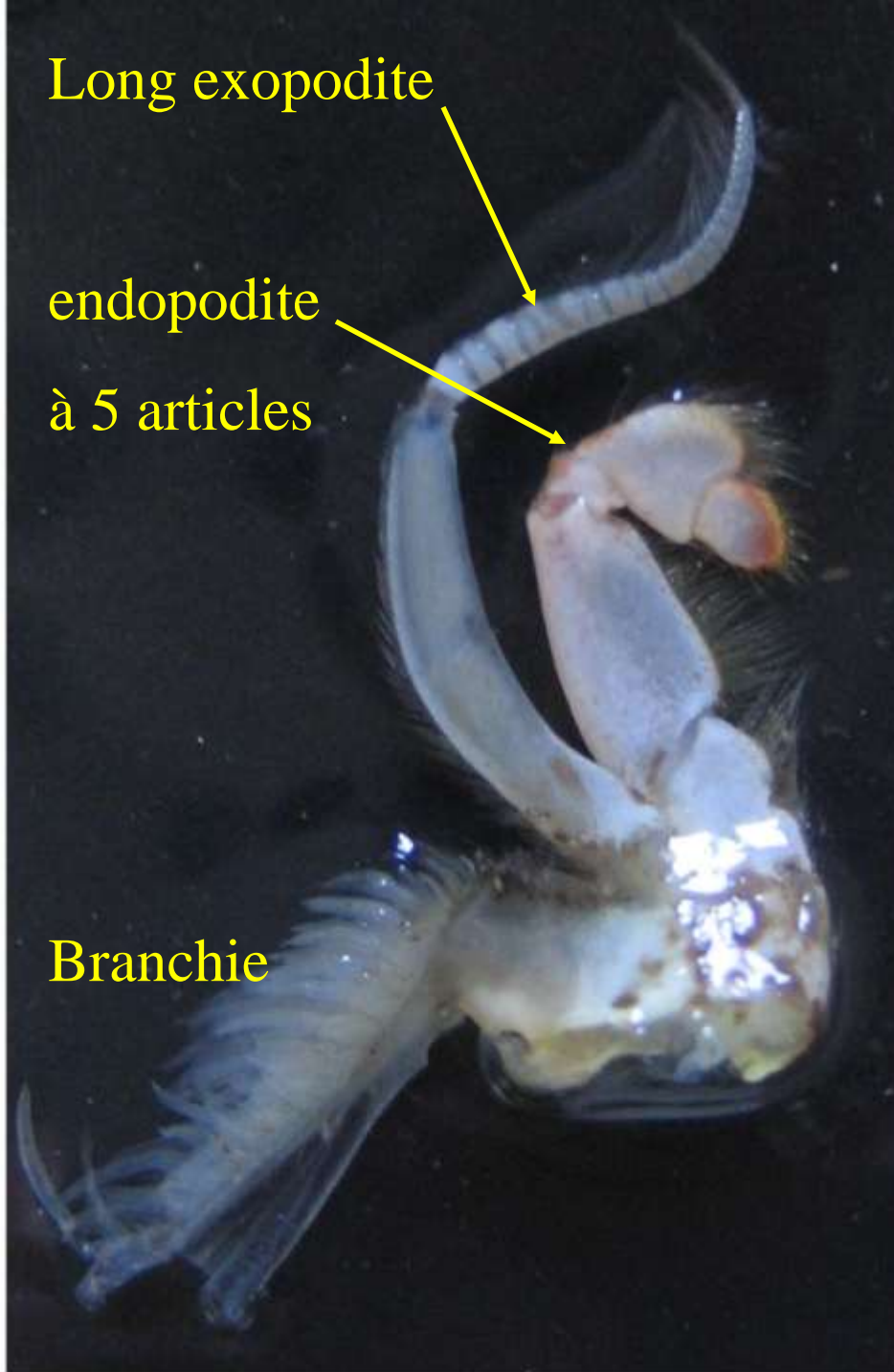


Long exopodite

endopodite

à 5 articles

Branchie



Patte- Mâchoire

Pmx 2

endopodite

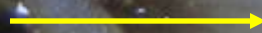
à 5 articles

(=> locomotion)

Long exopodite

(non visible)

Branchie



Patte- Mâchoire

Pmx 3



Panoplie d'appendices

