

## TP 2 – BG C3 Le climat de la Terre : changement climatique anthropique et impacts sur la biodiversité

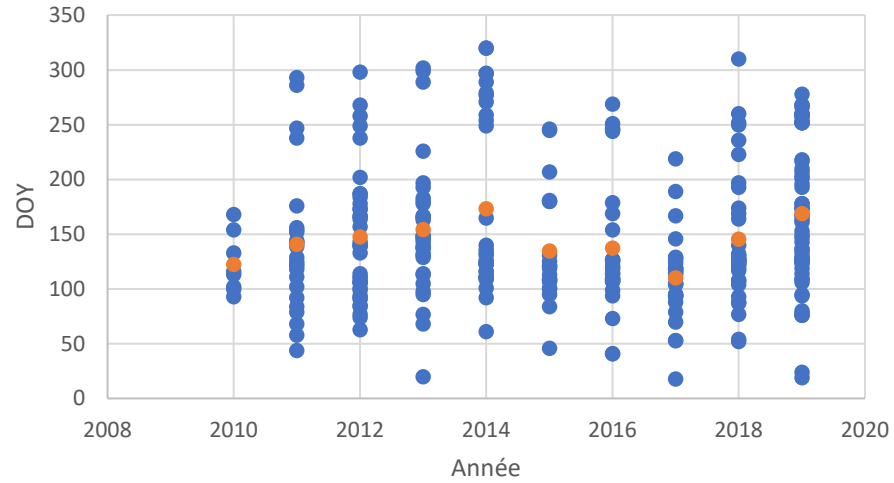


Mésange charbonnière *Parus major*  
[https://inpn.mnhn.fr/espece/cd\\_nom/3764](https://inpn.mnhn.fr/espece/cd_nom/3764)

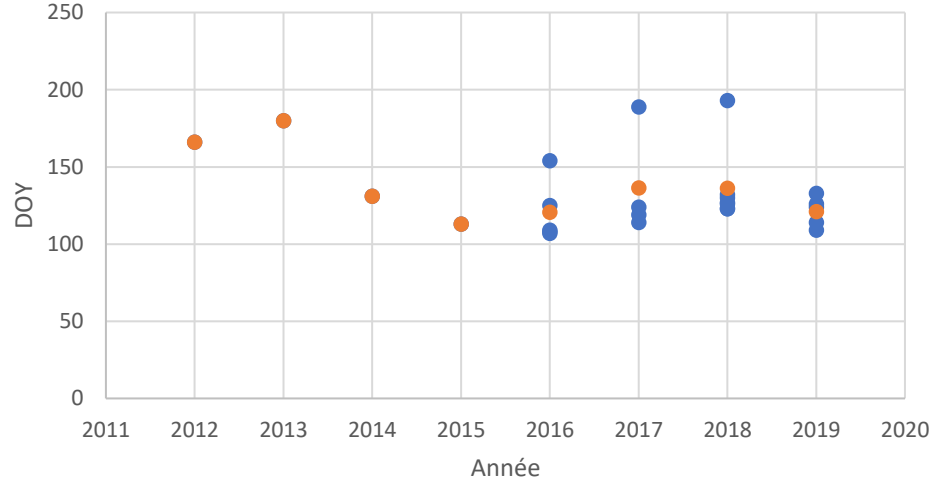


Bourdon terrestre *Bombus terrestris*  
[https://inpn.mnhn.fr/espece/cd\\_nom/53104](https://inpn.mnhn.fr/espece/cd_nom/53104)

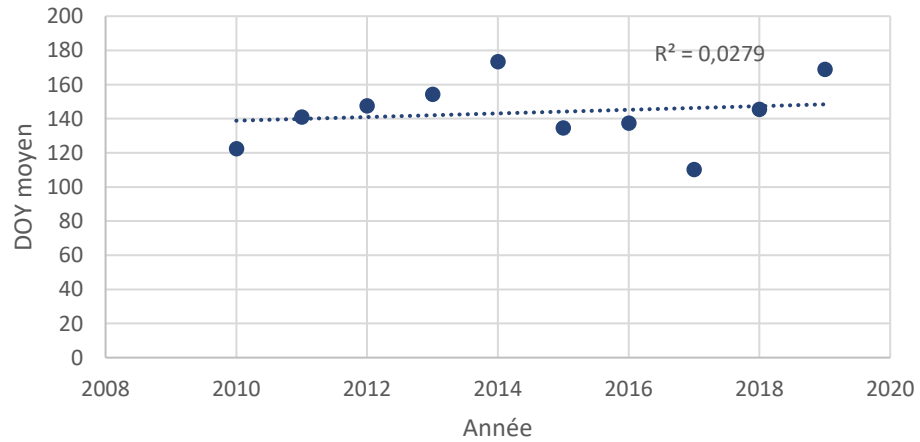
DOY sur l'ensemble des USA



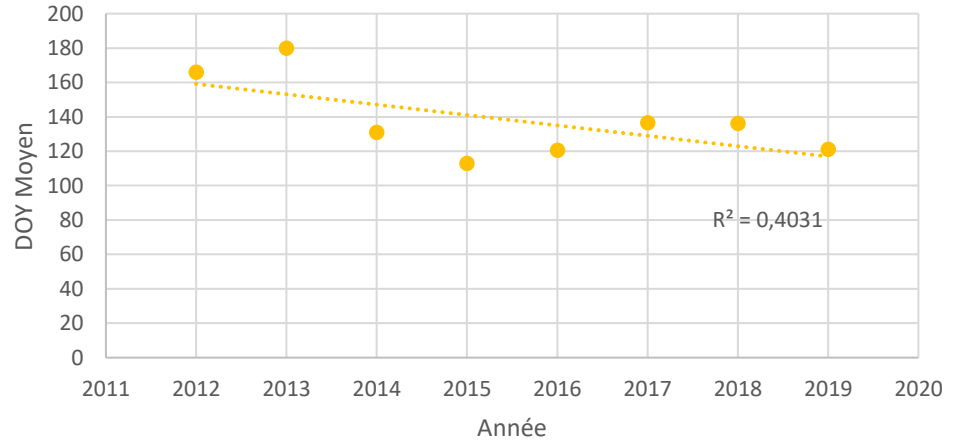
DOY Minnesota



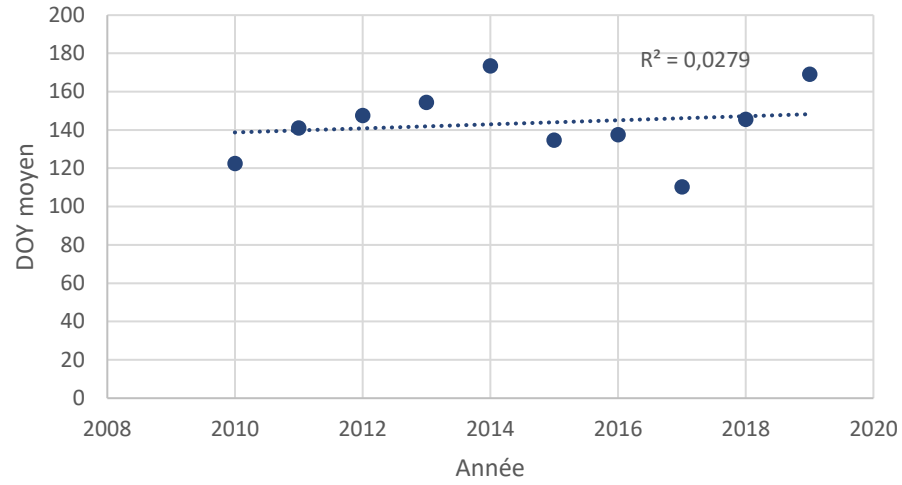
DOY moyen USA



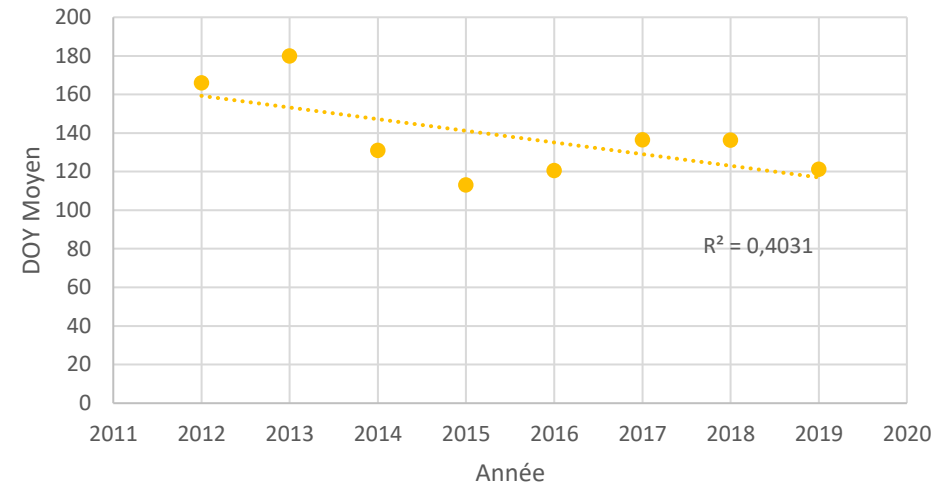
DOY Moy Minnesota



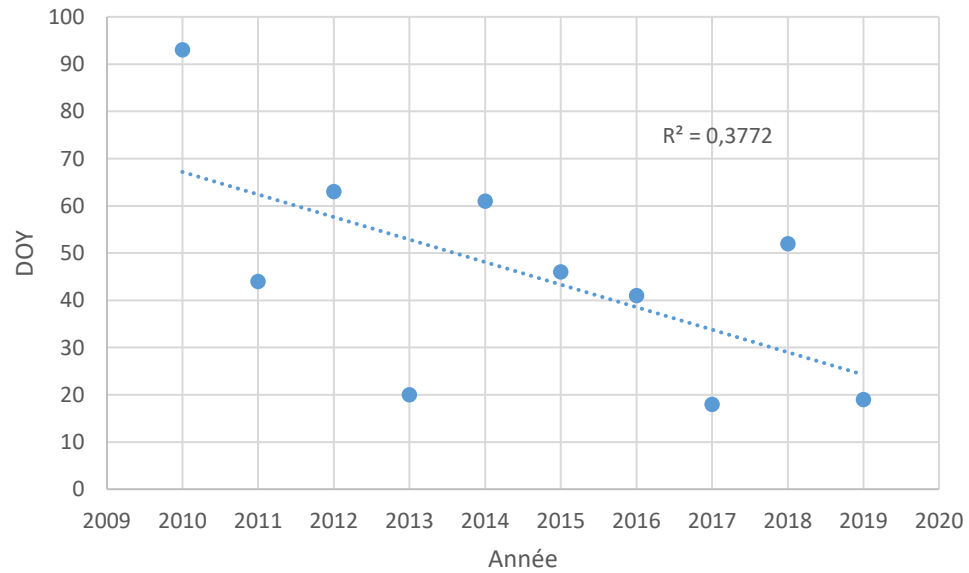
### DOY moyen USA



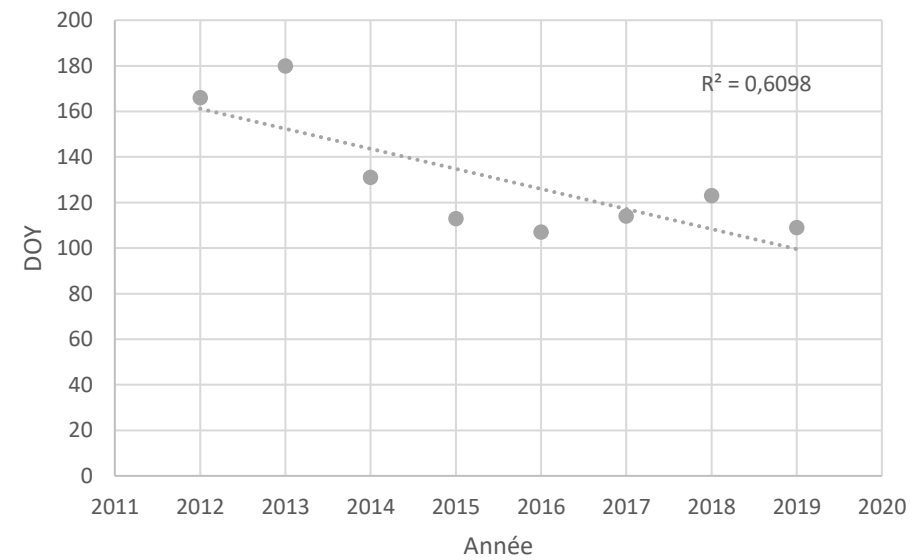
### DOY Moy Minnesota



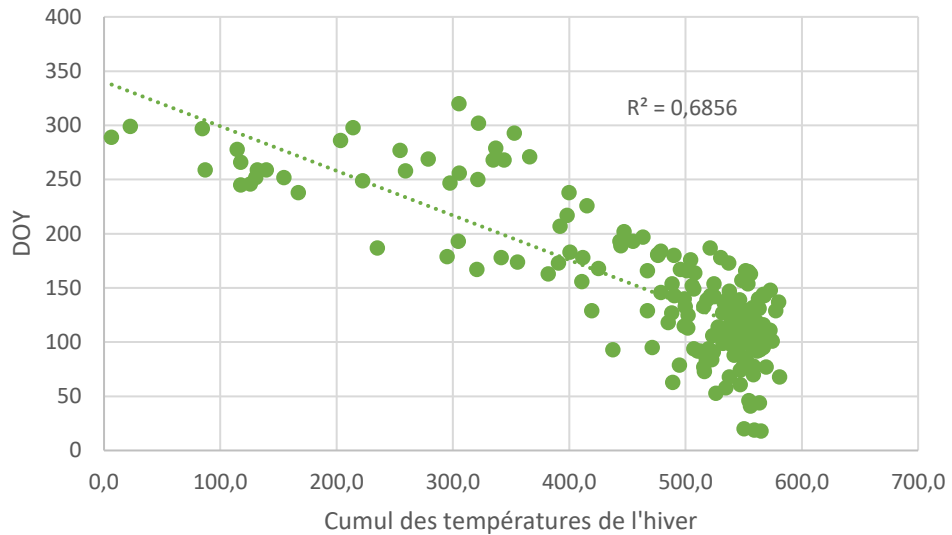
### DOY min sur l'ensemble des USA



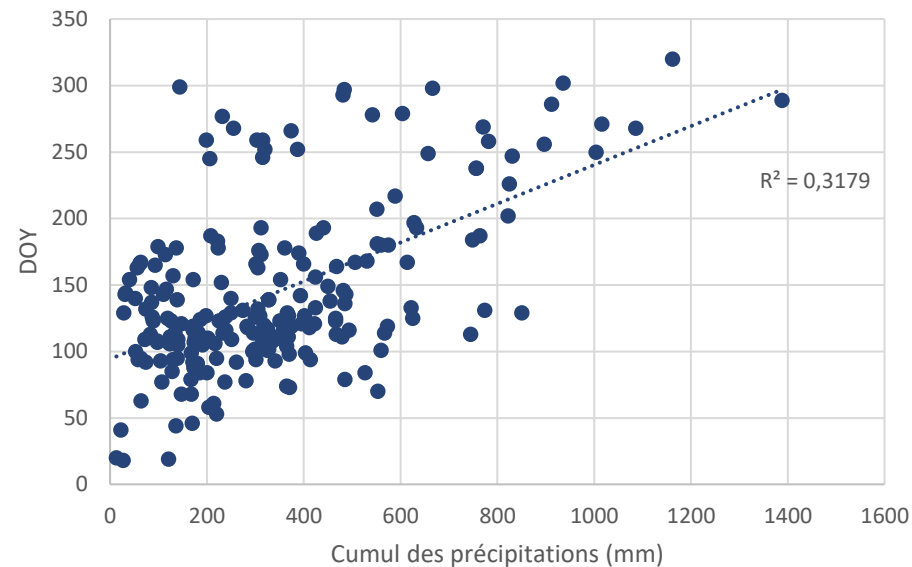
### DOY min Minnesota



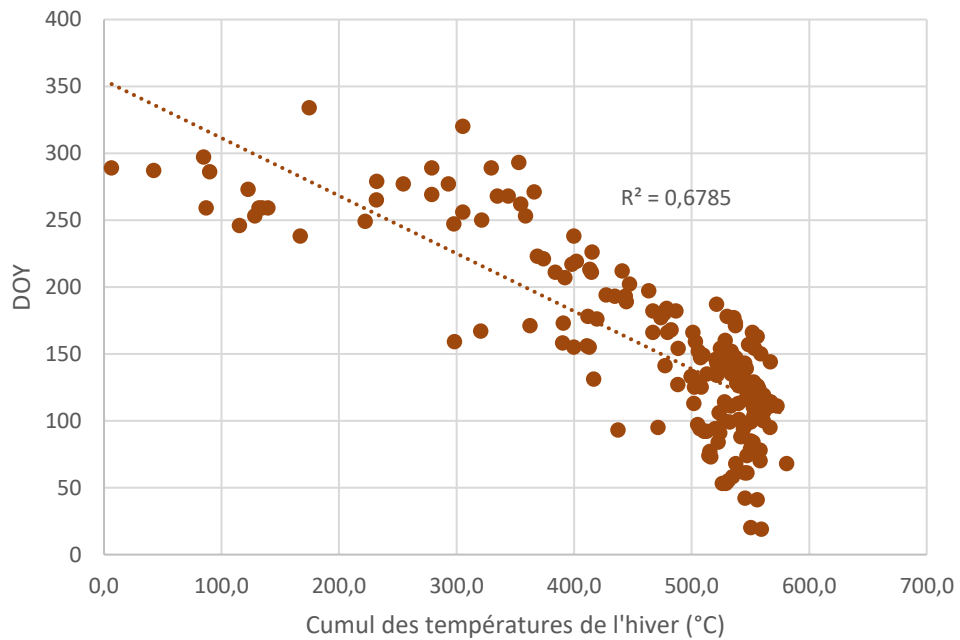
adultes actifs



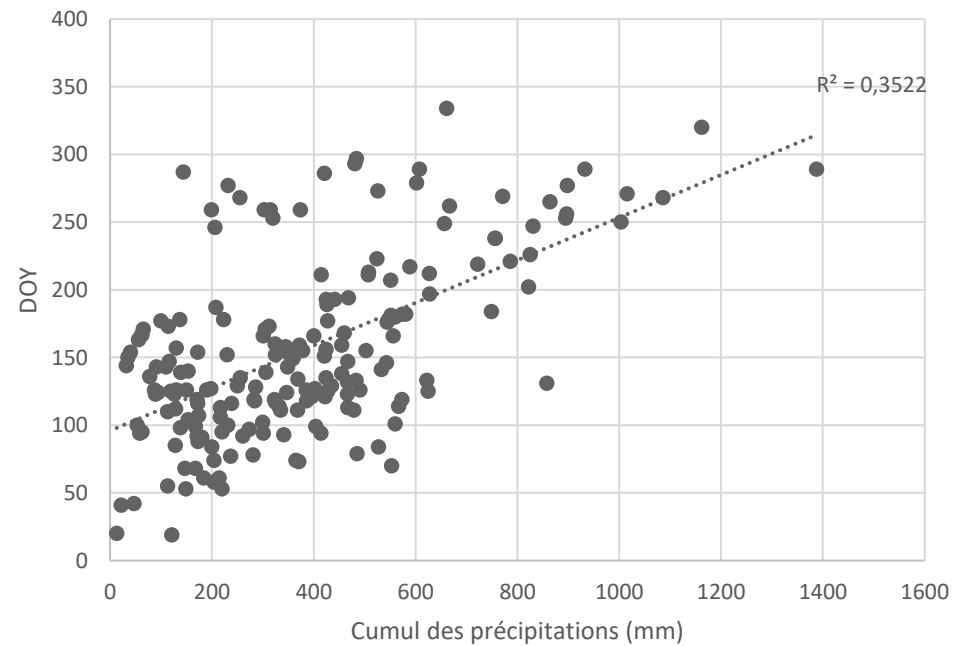
Adultes actifs



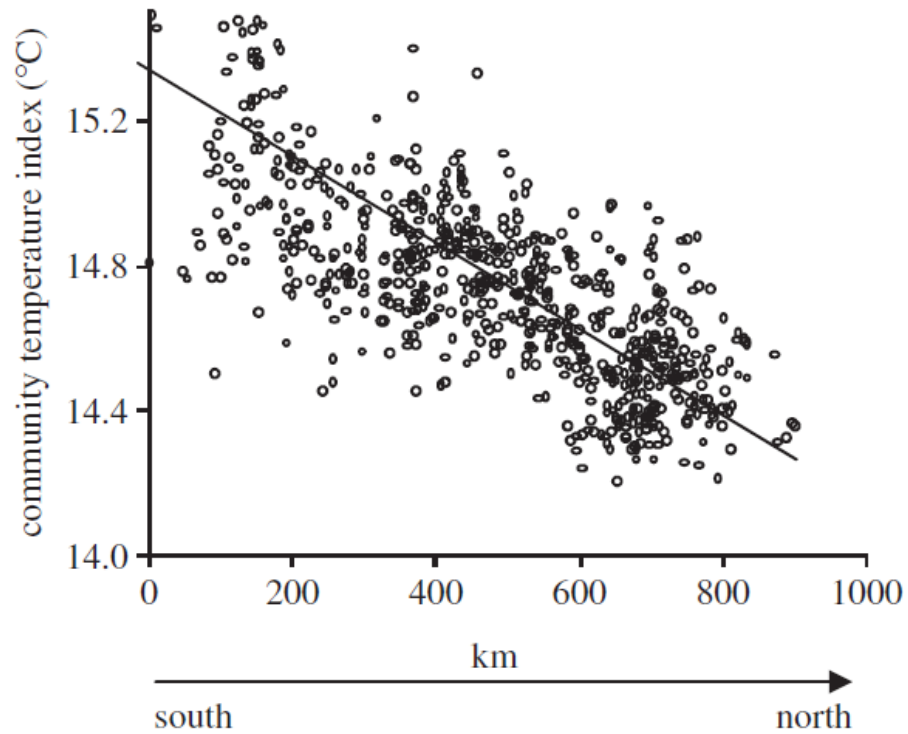
visite fleurs



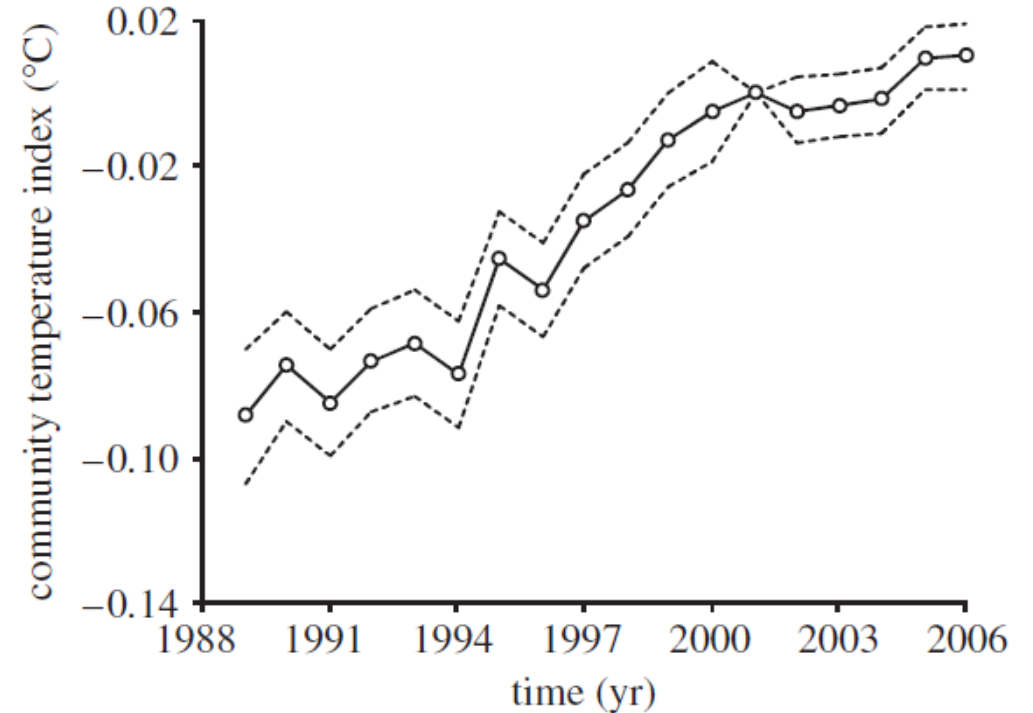
visite fleurs



# Effet du changement climatique sur la composition des communautés d'oiseaux en France

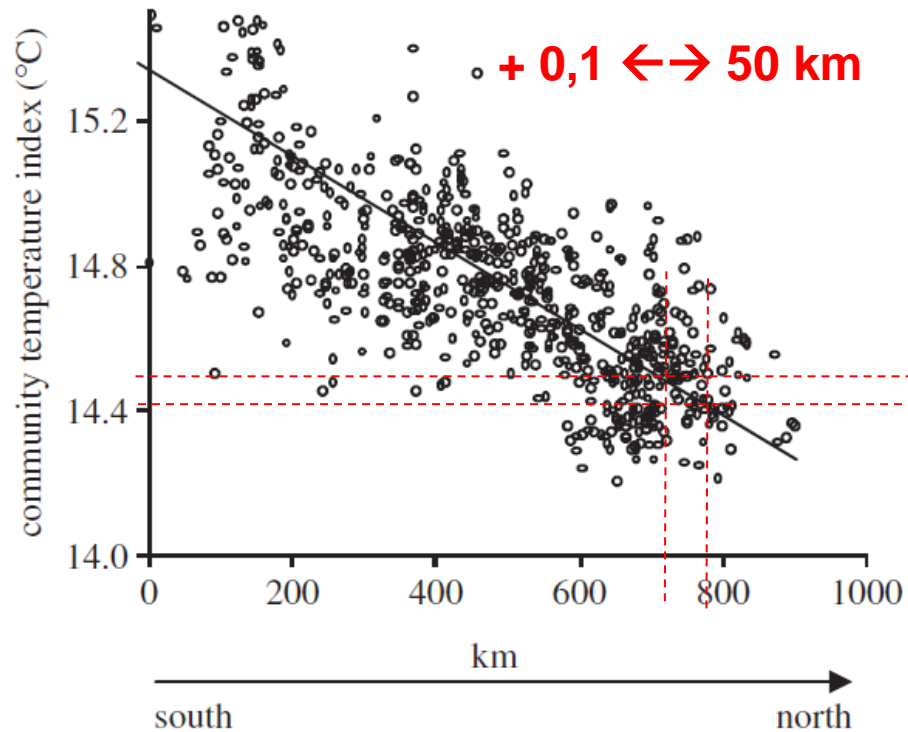


**Document 1.** Variation de l'indice thermique de la communauté, selon un gradient Nord – Sud.

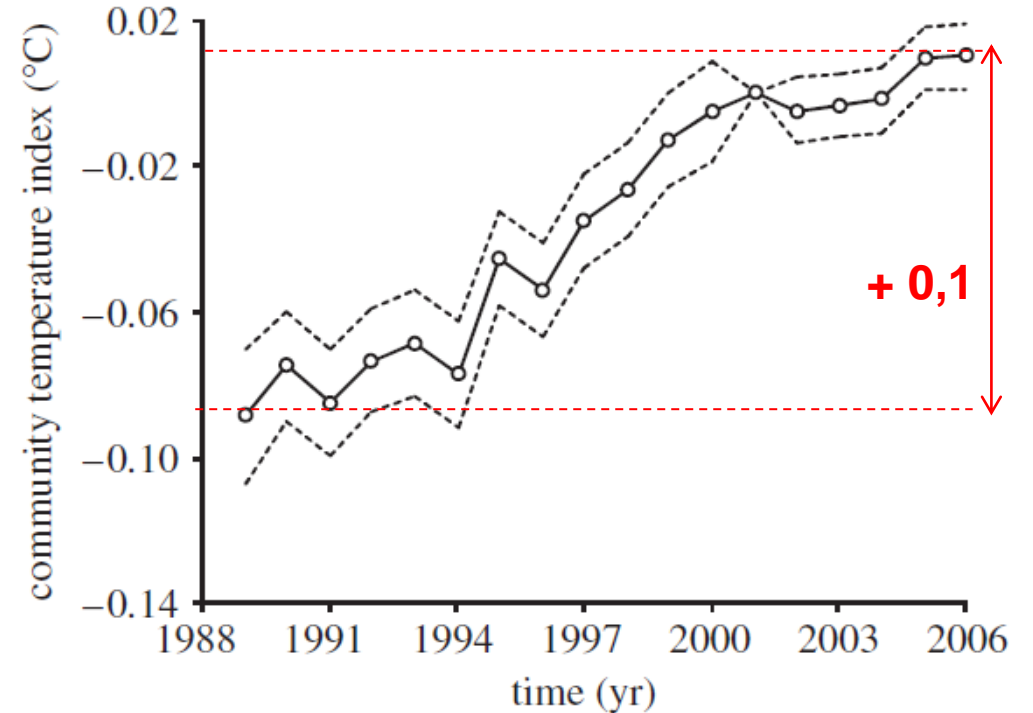


**Document 2.** Variation moyenne de l'indice thermique de la communauté, sur une même parcelle entre 1998 et 2006.

# Effet du changement climatique sur la composition des communautés d'oiseaux en France



**Document 1.** Variation de l'indice thermique de la communauté, selon un gradient Nord – Sud.



**Document 2.** Variation moyenne de l'indice thermique de la communauté, sur une même parcelle entre 1998 et 2006.